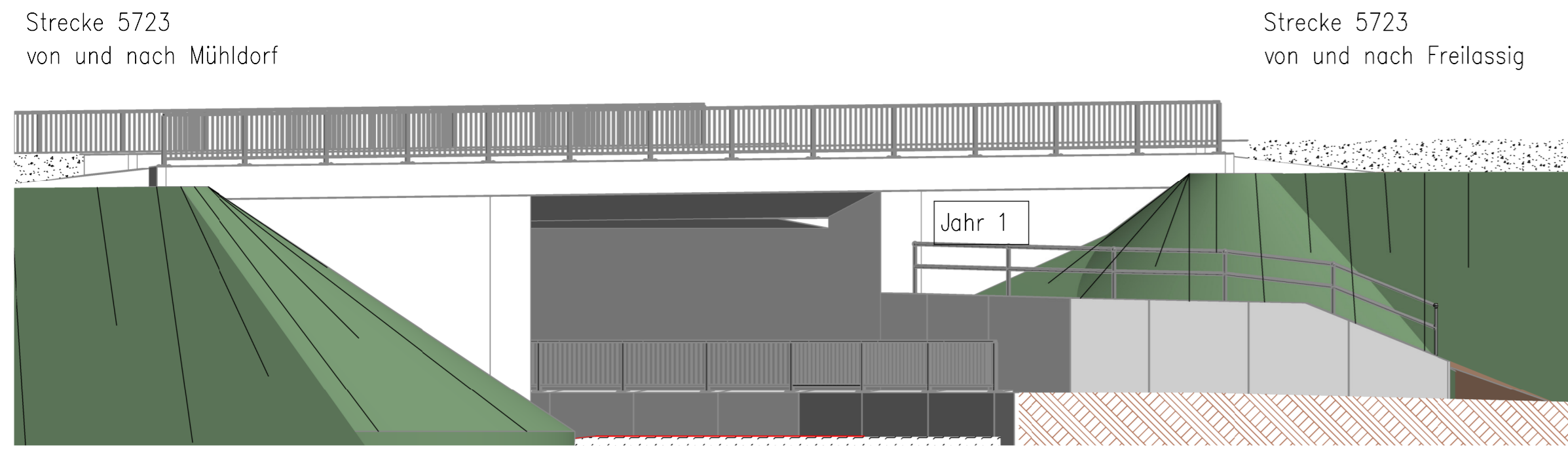
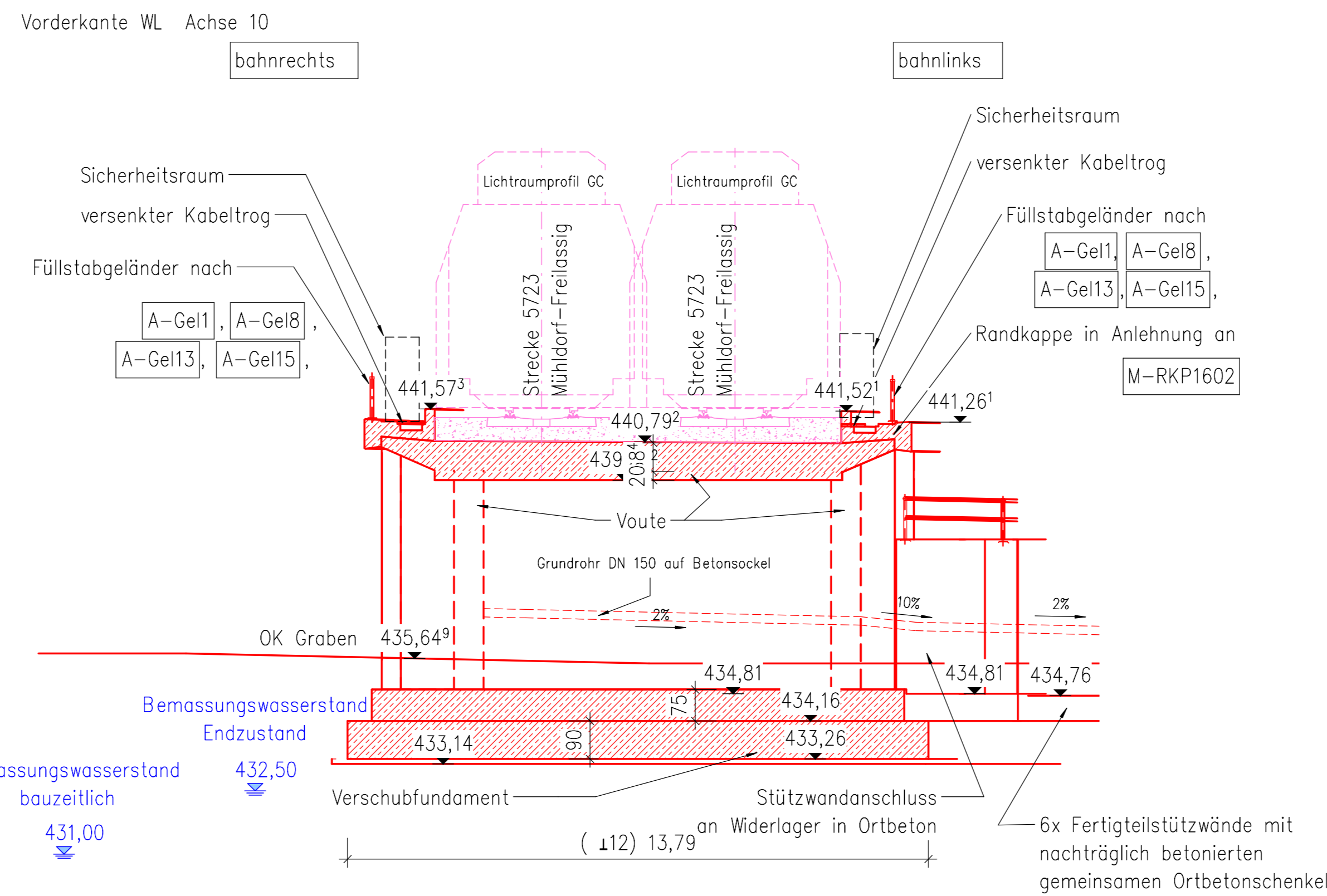


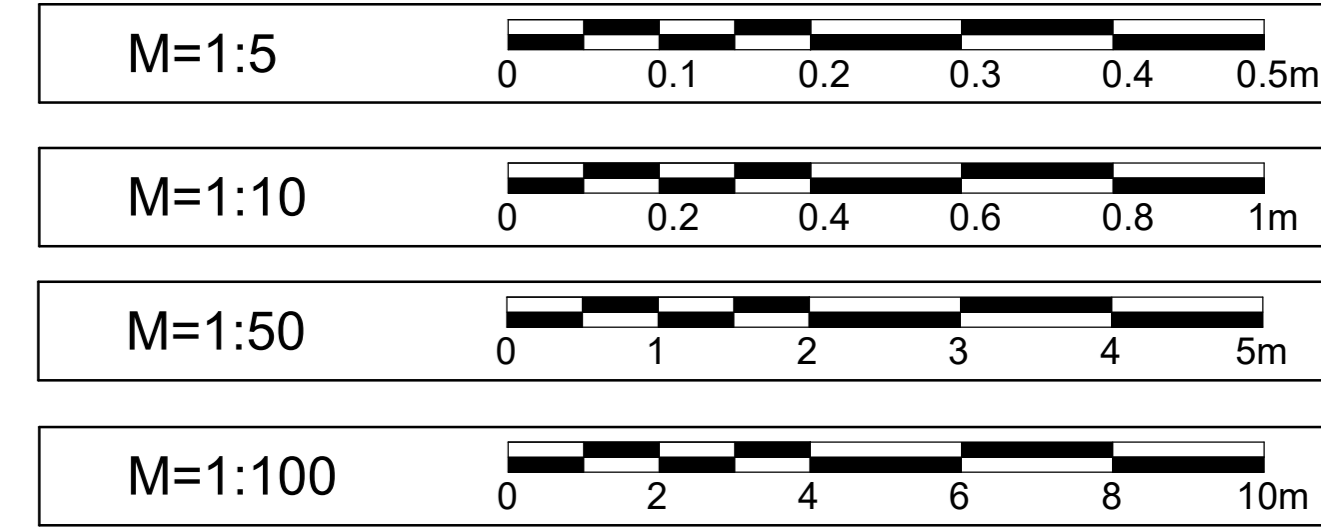
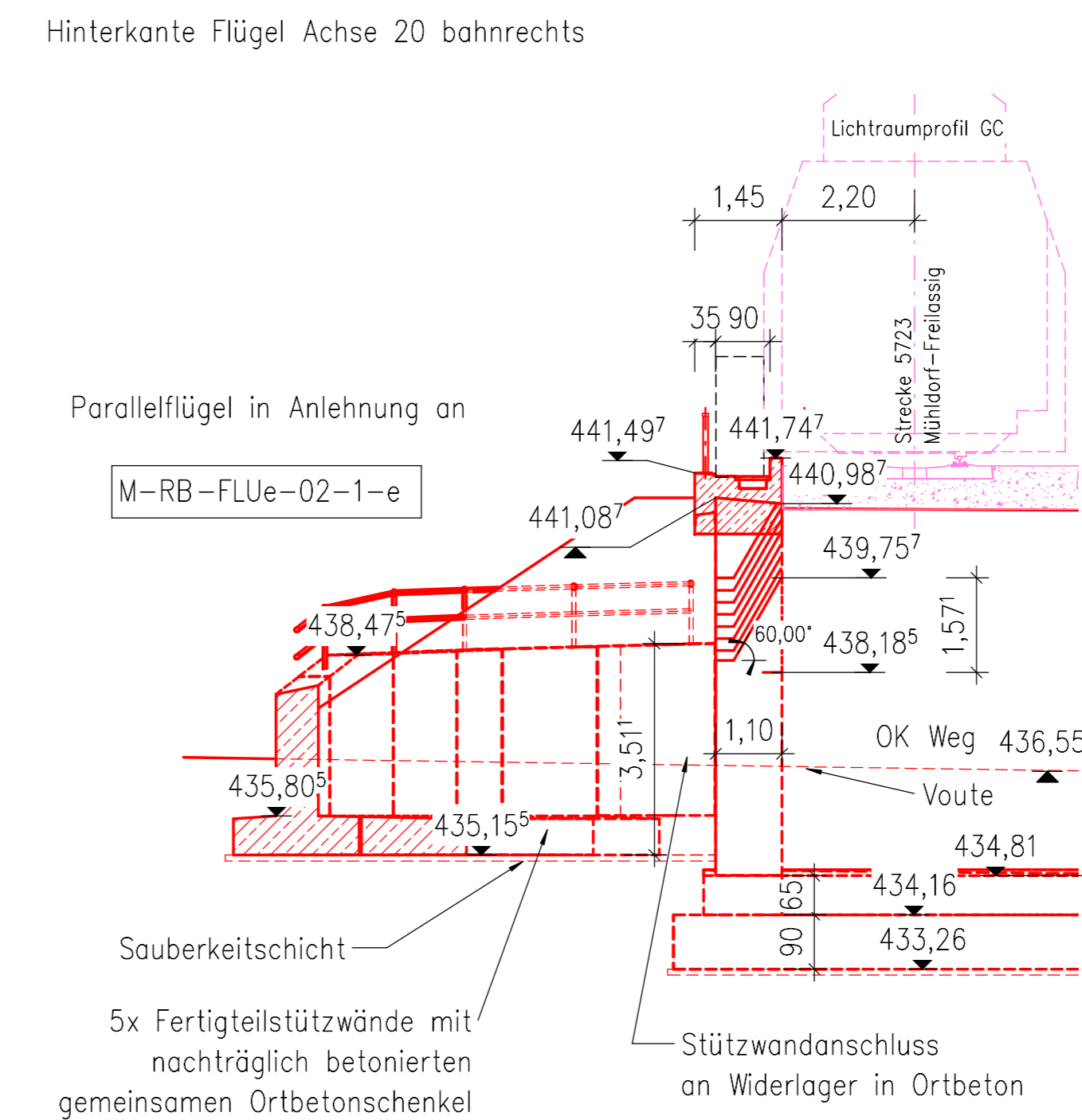
Ansicht Bahnrechts M 1 : 100



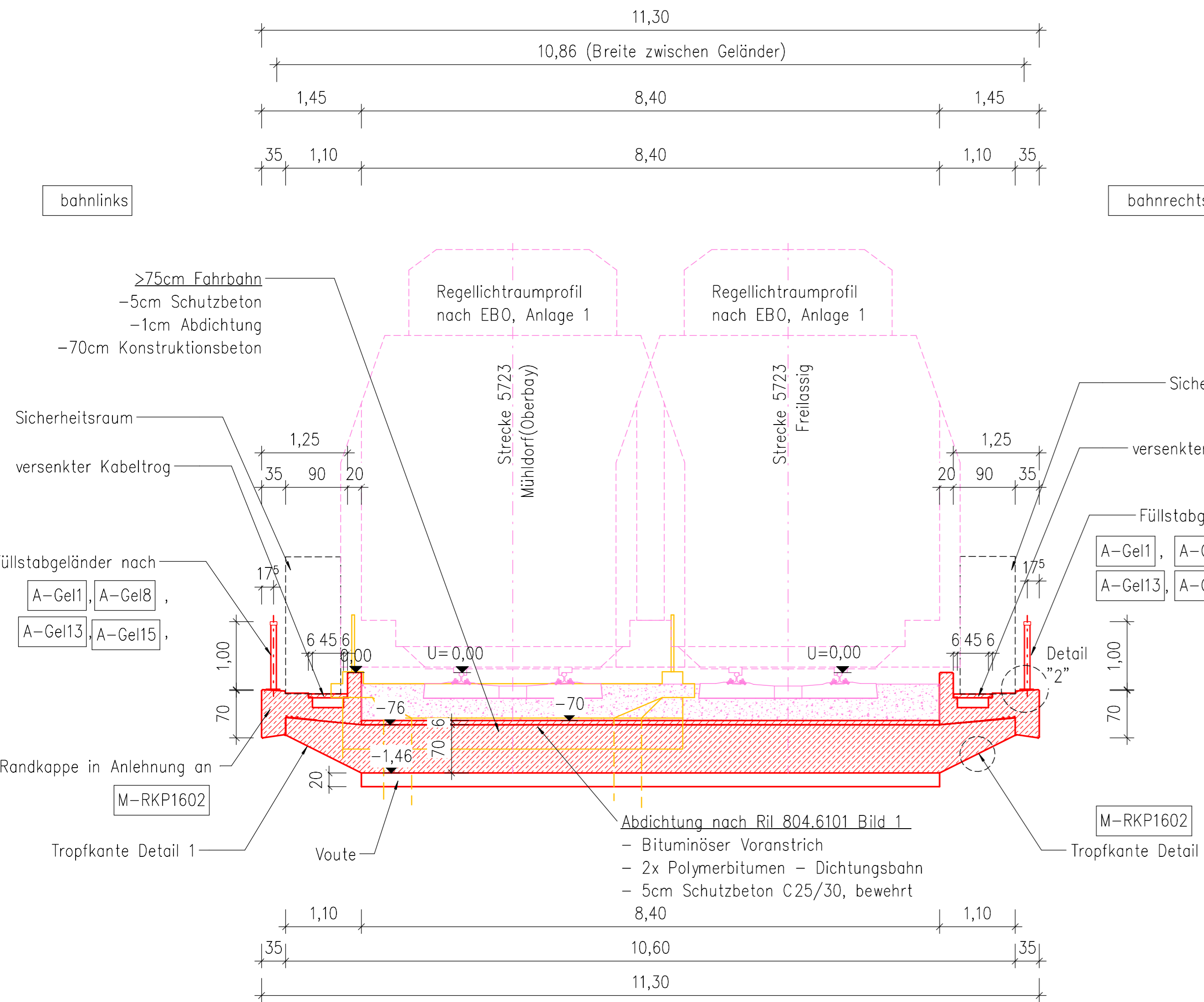
Schnitt D-D M 1 : 100



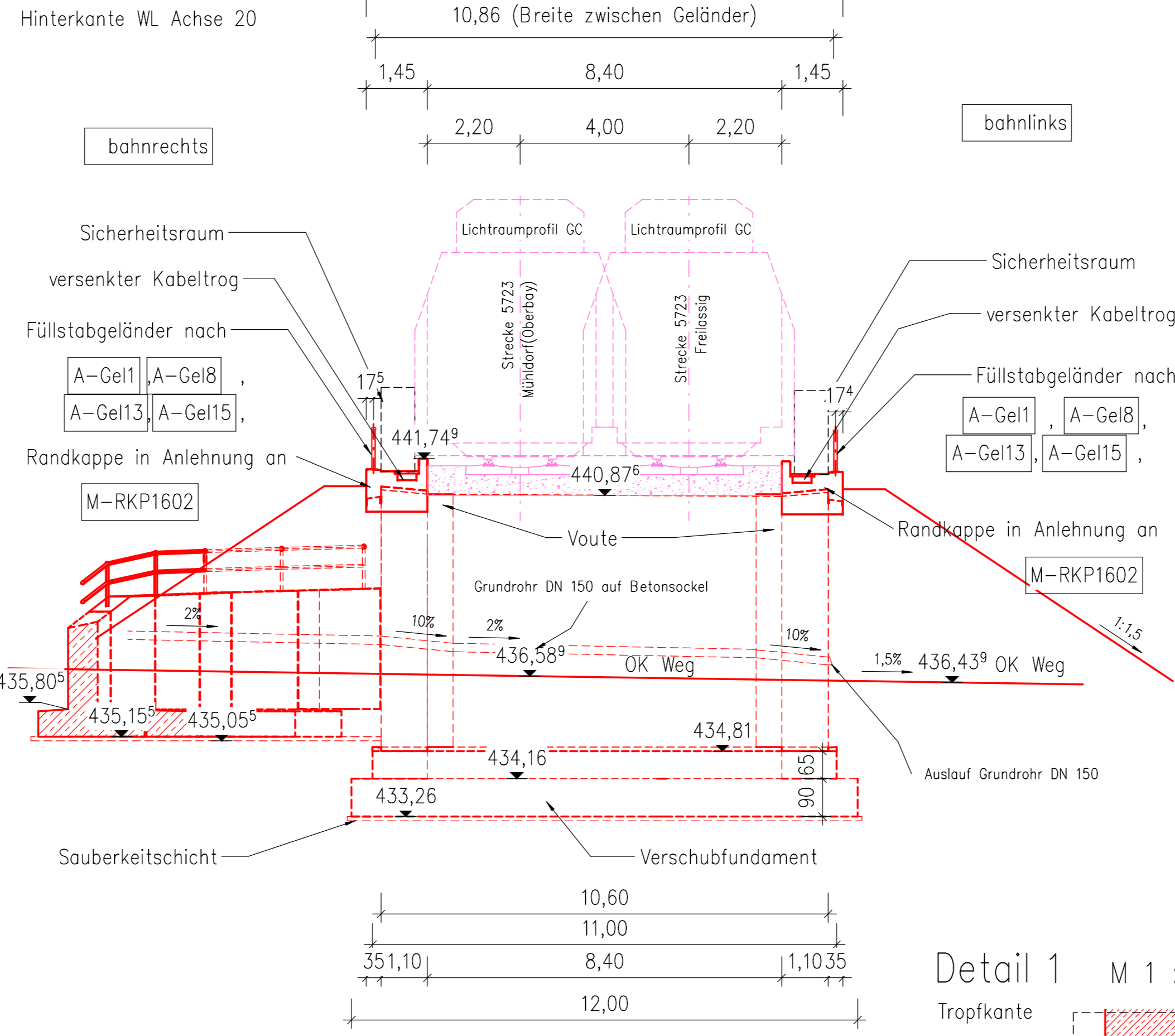
Schnitt F-F M 1 : 100



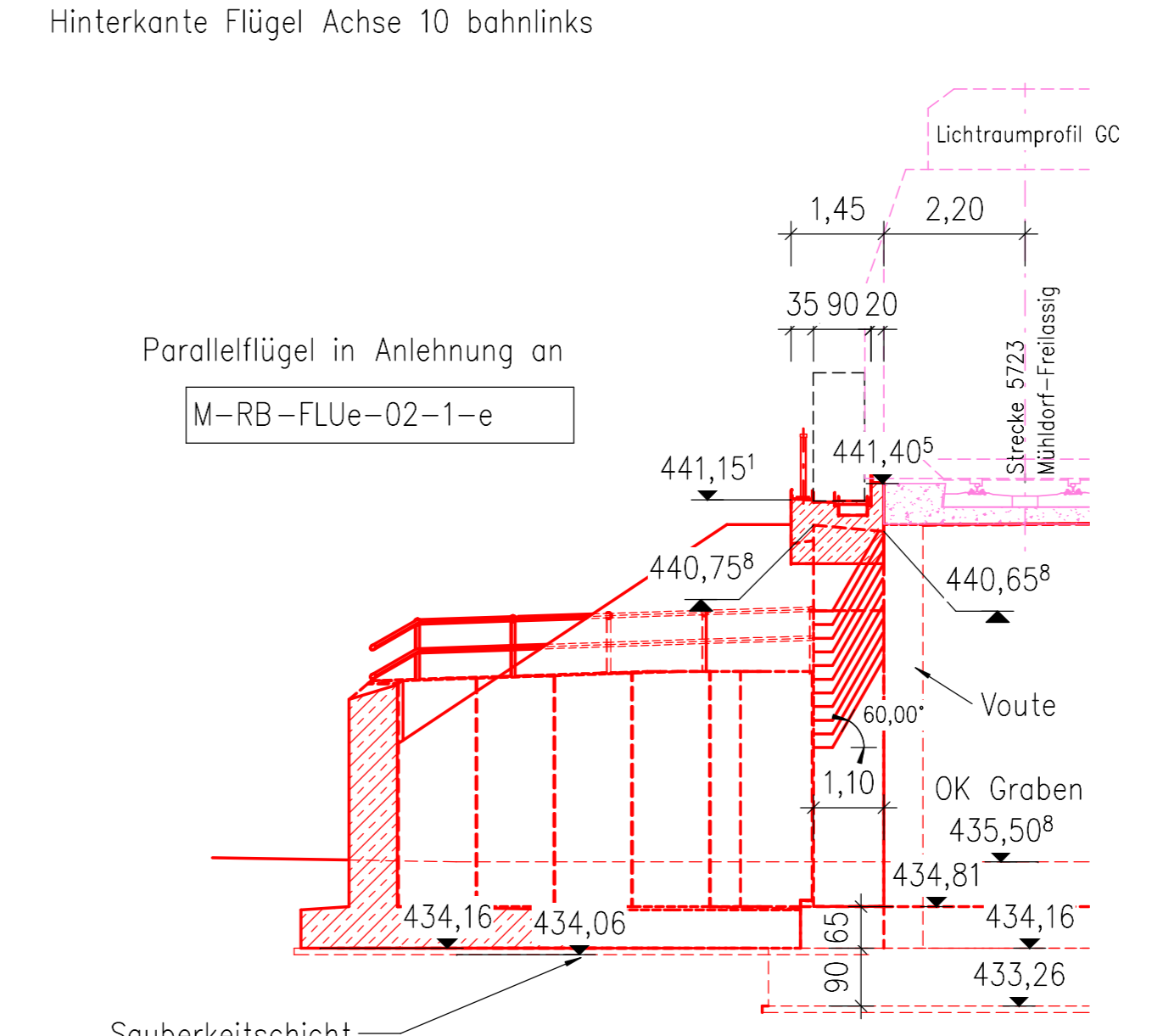
Regelquerschnitt M 1 : 50



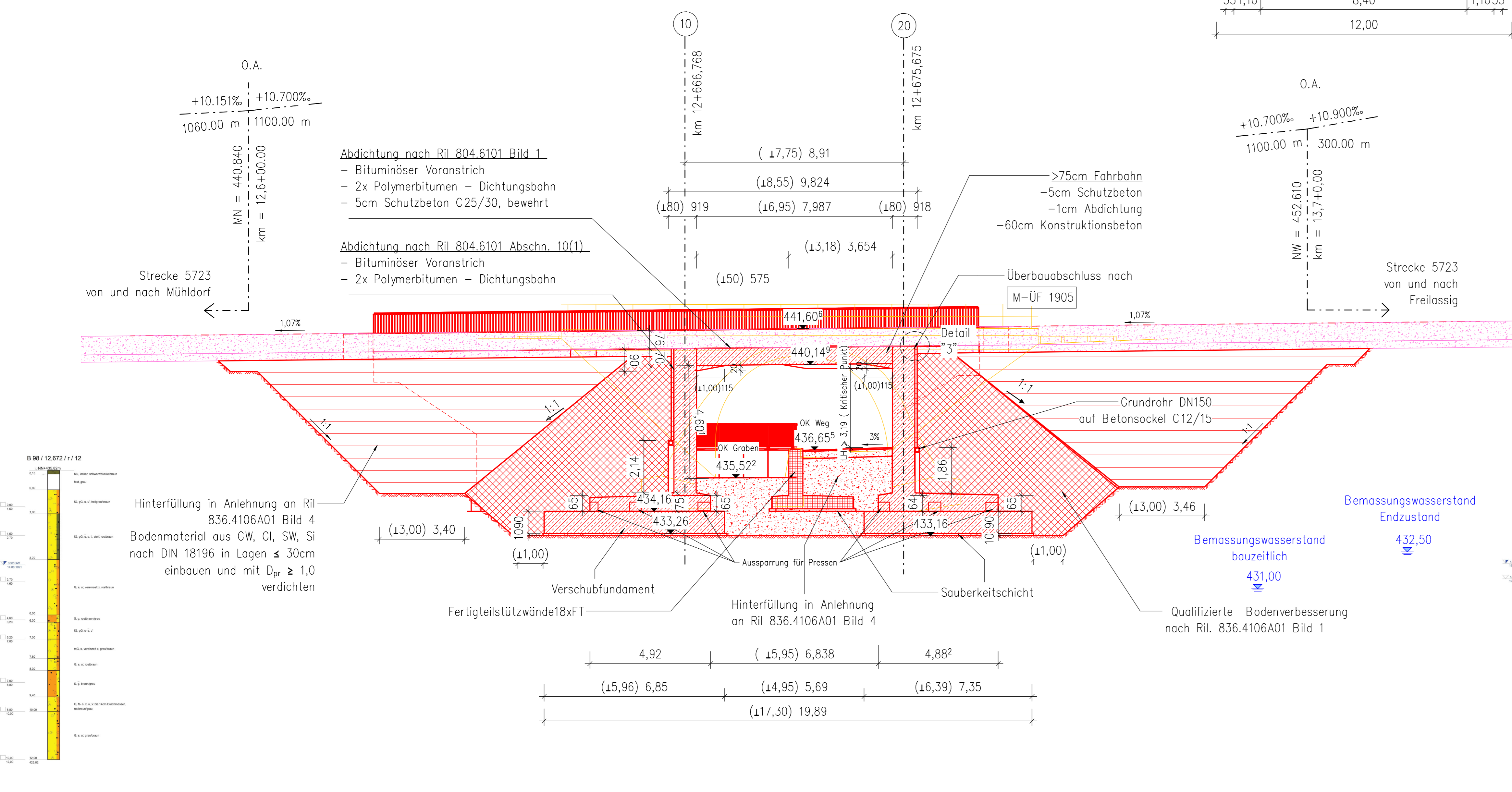
Schnitt C-C M 1 : 100



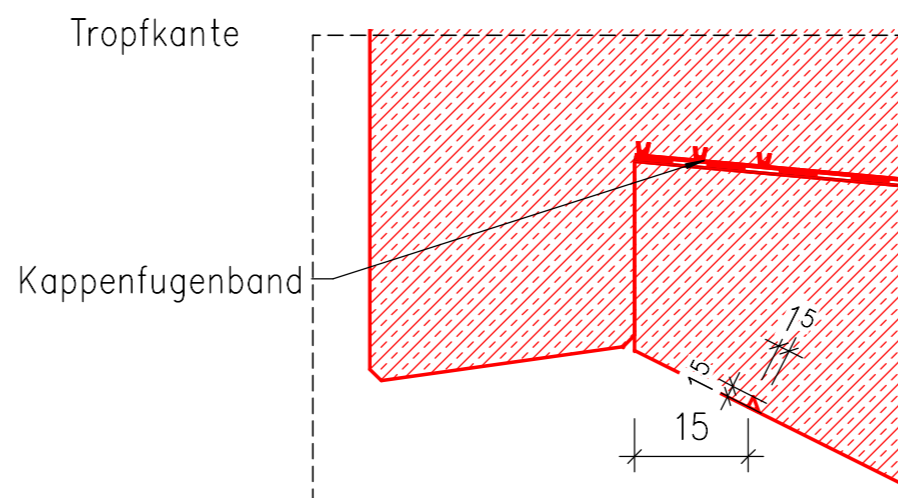
Schnitt E-E M 1 : 100



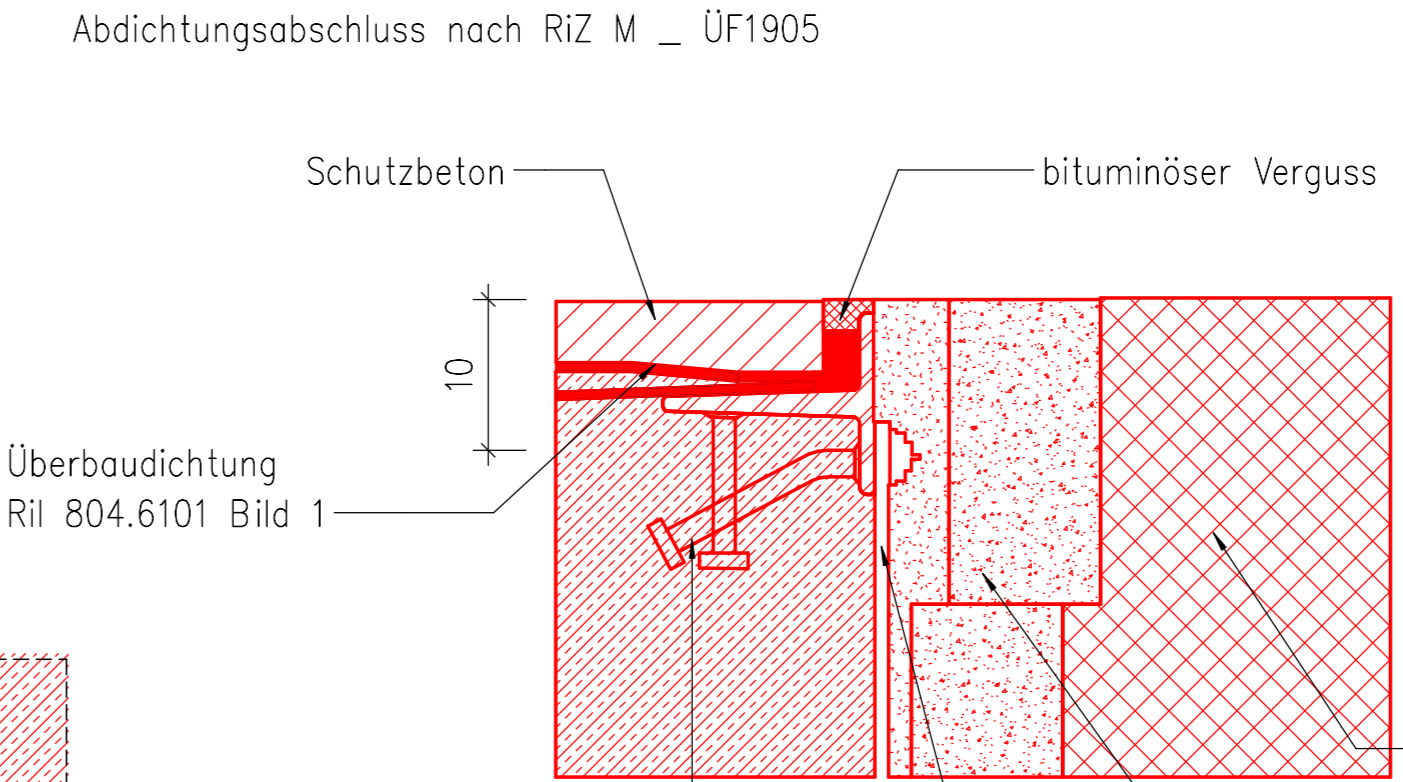
Längsschnitt B-B M 1 : 100



Detail 1 M 1 : 10



Detail 3 M 1 : 5



Detail 2 M 1 : 10

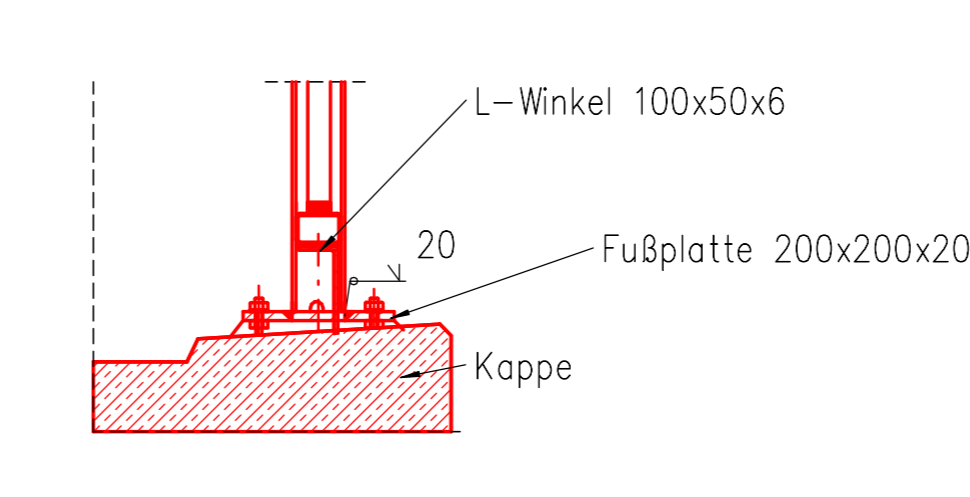


Table with 2 columns: Drawing Code and Description. Includes codes like ABS38-3-301-EP-EU-BA-1612-001 and their corresponding descriptions.

Table with 2 columns: Legend Item and Description. Includes 'Bestand' (existing), 'Neubau/Änderung' (new construction/change), and 'Rückbau' (deconstruction).

Table with 3 columns: Basis, Creator, and Date. Lists project milestones like 'Trossierung', 'Vermessung', and 'Vorplanung'.

Alle örtlich gebundenen Maße sind vor der Bauausführung vor Ort zu überprüfen.

Endgültige Abmessungen nach statisch-konstruktiven und wirtschaftlichen Erfordernissen.

Bauwerksplan Teil 3 - gilt nur in Verbindung mit Bauwerksplan Teil 1 und Teil 2 -

Project information block containing drawing codes, dates, scales, and project details for the railway bridge construction.